

# TUCSON



# Explore the colors of life.

Our compact SUV is a big step forward for the Hyundai brand. The TUCSON has a bold and athletic presence achieved through refined, flowing surfaces, dynamic proportions, sharp lines, and most importantly, our brand's signature element – the hexagonal grille. The TUCSON is designed and engineered to impress with its captivating looks, cutting-edge technology, and rewarding drivability.





# The unsurpassed.

The design of the Hyundai TUCSON is not only attractive to look at but also functional. Equipped with a state-of-the-art powertrain, the elegantly designed exterior underlines its sporty look. The ergonomic interior design has been enhanced by the best quality leather finish. TUCSON provides seamless connectivity and is equipped with the latest technology to make driving comfortable and the journey to your destination easier.







# Unparalleled confidence.

TUCSON's captivating exterior is mainly defined by 18-inch alloy wheels and modern LED headlights, which underline its sporty look and follows the cascading radiator grille. Every detail of TUCSON's elegantly designed exterior is thoughtfully crafted to create a bold and distinctive appearance that truly sets it apart.

## Hexagonal Radiator Grille

A cascading radiator grille is an impression of class.



## Full LED Static Bending & Auto-Leveling Head Lamps

Modern LED headlights accentuate its sporty look.



## LED Daytime Running Lights (DRL)

The DRL on TUCSON not only give it a striking presence on the road but also enhance visibility and provide safety.



## 18-inch Alloy Wheels

With its 18-inch alloy wheels, TUCSON's exterior exudes a sense of refined style.



# Crafted for comfort.

TUCSON's interior exceeds expectations with a fresh look that makes it even more comfortable and spacious. Premium leather upholstered dashboard with double stitching evokes a premium feel. TUCSON is equipped with state-of-the-art technology to make your travels more comfortable.

## Advanced Driving Experience

The TUCSON has advanced safety and convenience features, including auto brake hold, electronic parking brake, downhill assist, and parking sensors, providing drivers with more control, comfort, and peace of mind.

## Driving Modes

With drive modes, you get to pick the style that suits you best: NORMAL is for relaxed everyday driving while ECO gives you optimal fuel efficiency, and SPORT is for quicker acceleration.

Premium Leather Seats





Panoramic Sunroof



8-Way Powered Driver Seat with 2-Way Lumbar Support



# Where technology meets style.

Attention is paid to every detail, making the interior of TUCSON exceptional. The ergonomic interior design has been enhanced by softened materials and two-tone color scheme.

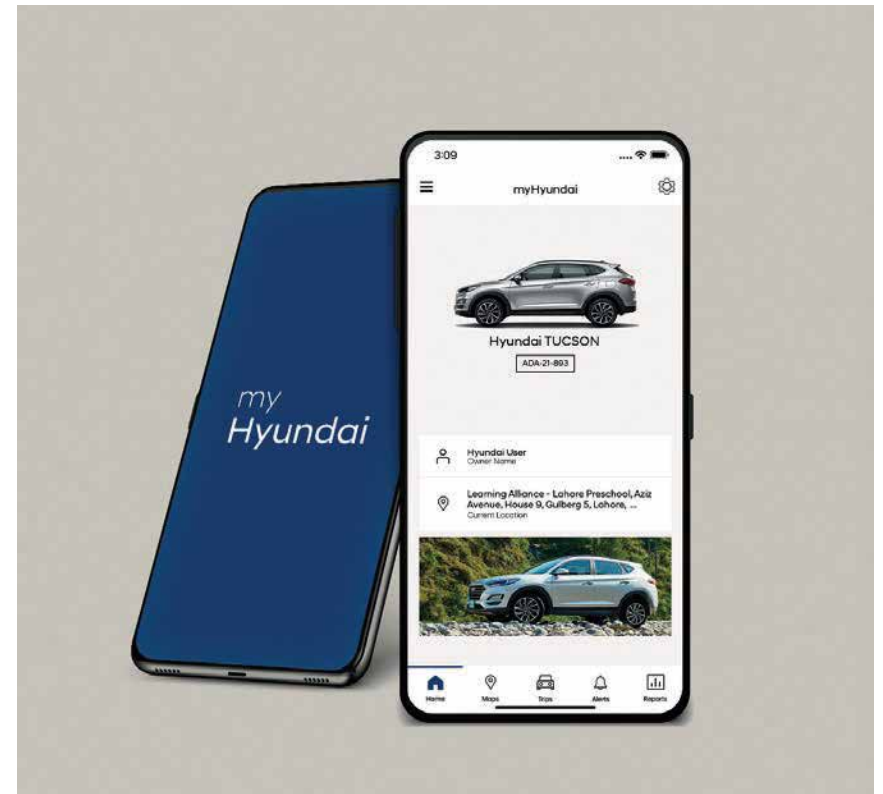
A masterful blend of style, comfort, and innovation.



10.1-inch Floating Infotainment System



myHyundai App







# An elegant performer.

The TUCSON is equipped with a state-of-the-art powertrain that produces low levels of CO<sup>2</sup> and meets the latest Euro 2 Temp emission standards.

## 2.0 MPi Gasoline Engine

---

**155** Maximum Power  
HP/6,200 rpm

**196** Maximum Torque  
N-m/4,000 rpm



# Power up with your favorite powertrain.

TUCSON is an exceptional driving machine that creates the perfect balance of style and class that goes beyond the conventional.



## HTRAC All-Wheel Drive

When the weather takes a turn for the worse, HTRAC keeps you moving. The heart of this all-wheel drive system is an advanced electronic controller that continuously analyzes your speed and road conditions. It automatically optimizes torque distribution among the four wheels and will apply the brakes, if necessary, to ensure maximum traction and directional stability when the going gets rough.





# Versatile cargo space.

TUCSON offers the largest luggage volume in its class. The 513 liters capacity can be expanded to 1,503 liters by folding down the rear seats.

## Motionless Smart Tailgate System

The Smart Tailgate System in TUCSON offers easy loading and unloading. The tailgate automatically opens as the driver approaches the rear door and the smart key is detected for 3 seconds. The height of the tailgate is adjustable to suit your space.







Including luggage screen



Rear seats folded 40%



Rear seats folded 60%



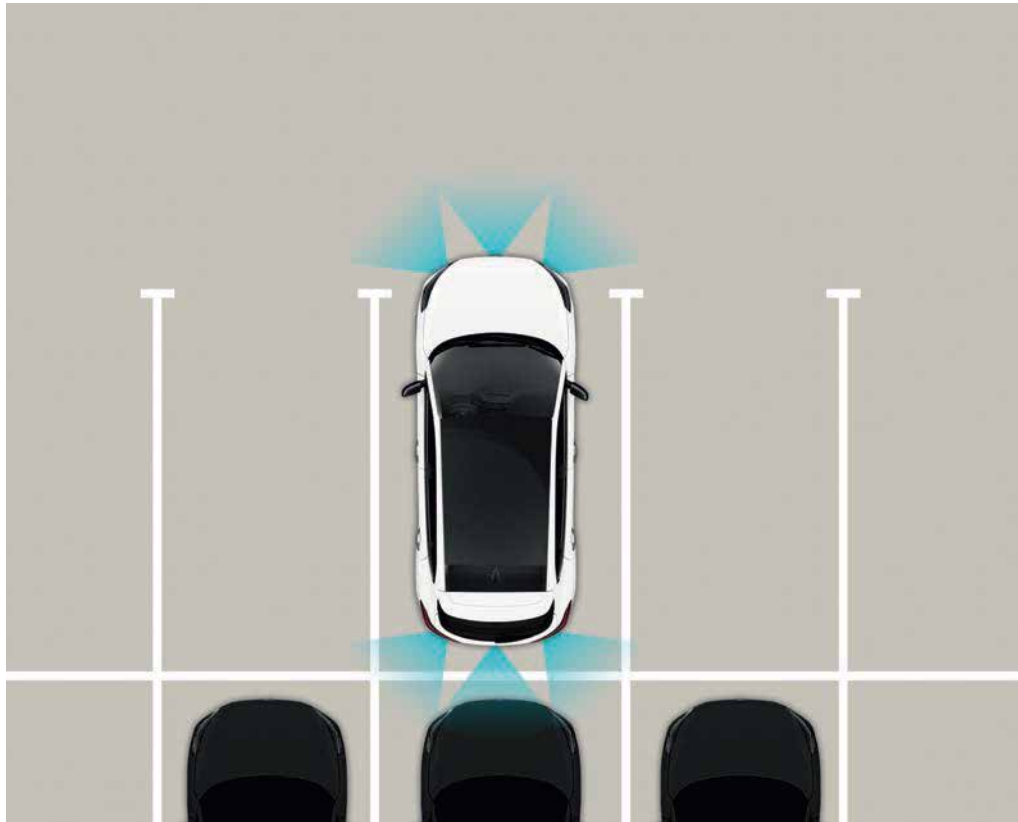
Rear seats folded



# At the forefront of safety.

Advanced driving technologies offered in TUCSON are based on rigorous safety measures you can always rely on.

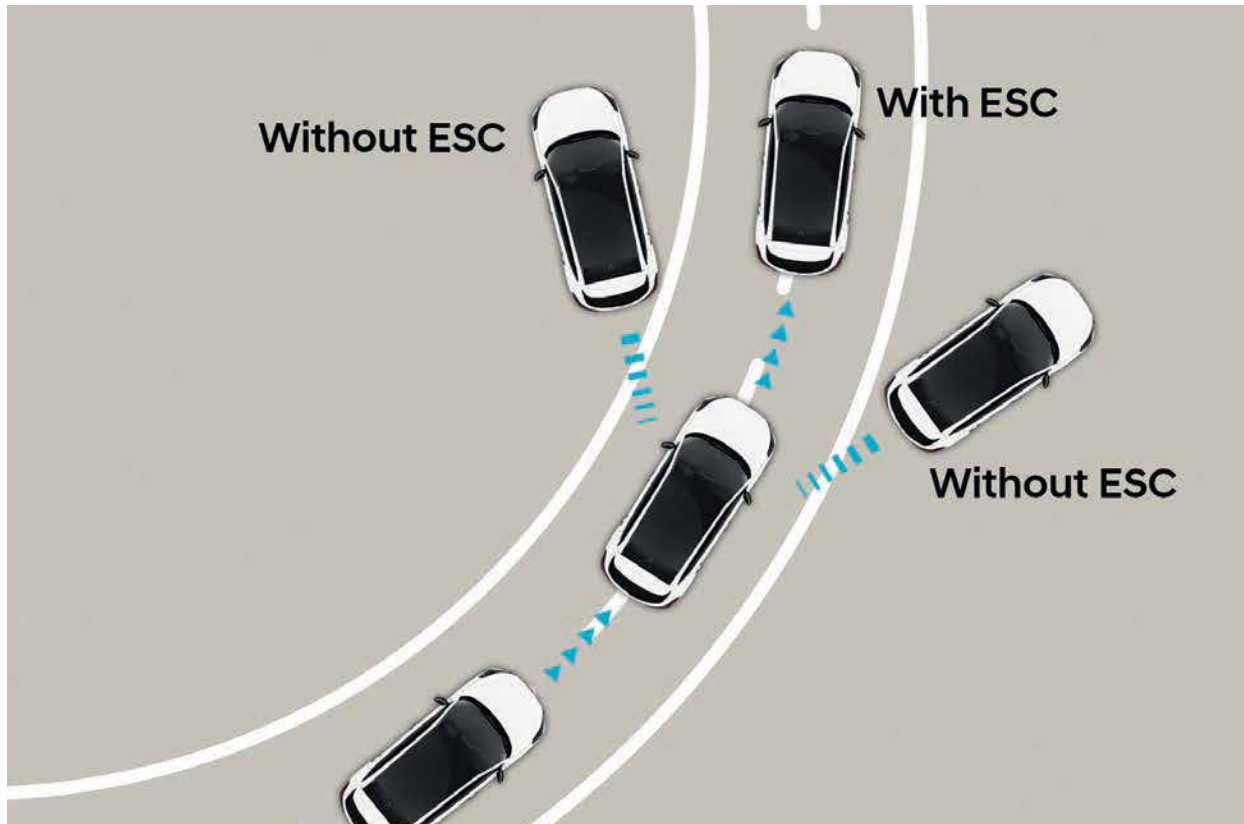
Front & Rear Parking Sensors



Dual SRS Airbags



Electronic Stability Control



Hill-Start Assist Control



Downhill Brake Control



# Features



LED Daytime Running Lights (DRL)



LED Outside Mirror Repeaters



Chrome-Coated Outdoor Handles



Smart Tailgate System



Puddle Lamps



Panoramic Sunroof



Chrome-Coated Beltline



Front and Rear Parking Sensors



Full LED Tail Lights



Welcome Lights



Push Start Button



Steering Wheel with Multimedia Controls



Auto Light Control



Traction Control & Differential Lock



Electronically Adjustable Seats



Wireless Phone Charging



Rear Ventilation



Full Auto Dual Zone Air Conditioning System



Electronic Parking Brake with Auto Hold

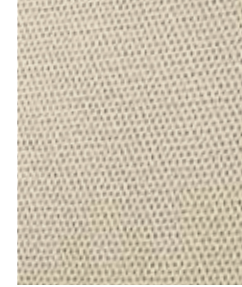


Connection (AUX and USB)

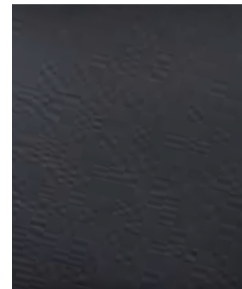
# Interior colors



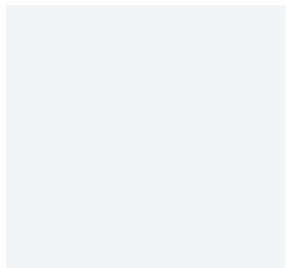
Beige two-tone Interior



Black one-tone Interior



# Exterior colors



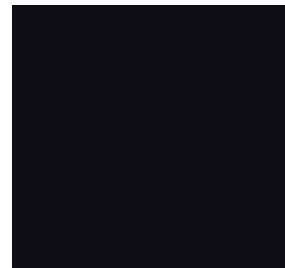
Polar White



Graphite Grey Metallic



Metallic Silver



Diamond Metallic Black



Oxford Blue



Magnetic Force



Rain Forest

# Specifications

Variant	FWD A/T GLS	FWD A/T GLS Sport	AWD A/T Ultimate
<b>Dimensions</b>			
Body Type	SUV	SUV	SUV
Exterior L x W x H (mm)	4,480 x 1,850 x 1,660	4,480 x 1,850 x 1,660	4,480 x 1,850 x 1,660
Wheelbase (mm)	2,670	2,670	2,670
Ground Clearance (mm)	172mm	172mm	172mm
Number of Doors	5 doors	5 doors	5 doors
Seating Capacity	5 persons	5 persons	5 persons
Number of Seating Rows	2 rows	2 rows	2 rows
<b>Engine</b>			
Fuel Type	Petrol	Petrol	Petrol
Displacement (cc)	1999	1999	1999
Max Power kW (HP) / rpm	114 (155) / 6,200	114 (155) / 6,200	114 (155) / 6,200
Max Torque N-m / rpm	196 / 4,000	196 / 4,000	196 / 4,000
Engine Type	16-Valve	16-Valve	16-Valve
Cylinders	In-Line 4-Cylinder	In-Line 4-Cylinder	In-Line 4-Cylinder
Compression Ratio	10,6 : 1	10,6 : 1	10,6 : 1
Fuel System	MPi	MPi	MPi
Fuel Tank Capacity (l)	62	62	62
<b>Drive Type &amp; Transmission</b>			
Transmission	6-Speed A/T	6-Speed A/T	6-Speed A/T
Drive Mode Select	X	○	○
<b>Wheel &amp; Tyre</b>			
Wheel Type	Alloy Wheel	Alloy Wheel	Alloy Wheel
Wheel Size	18"	18"	18"
Tyre Size	225/55 R18	225/55 R18	225/55 R18
Spare Tyre	Wheel & Tyre	Full Size	Full Size
	Wheel Type	Alloy Wheel	Alloy Wheel

# Specifications

Variant		FWD A/T GLS	FWD A/T GLS Sport	AWD A/T Ultimate
<b>Suspension</b>				
Front		MacPherson Strut	MacPherson Strut	MacPherson Strut
Rear		Multi-Link + HPD-PLD Type	Multi-Link + HPD-PLD Type	Multi-Link + HPD-PLD Type
<b>Steering Wheel</b>				
Steering Wheel	Material	4-Spoke Urethane	4-Spoke Leather	4-Spoke Leather
	Power Steering	○	○	○
	Steering Wheel Switches	Audio + MID + Voice Control + Cruise Control	Audio + MID + Voice Control + Cruise Control	Audio + MID + Voice Control + Cruise Control
	Adjustment	Tilt & Telescopic	Tilt & Telescopic	Tilt & Telescopic
TGS Knob		Urethane	Leather	Leather
<b>Brake</b>				
Brake	Front	16" Disc	16" Disc	16" Disc
	Rear	16" Disc	16" Disc	16" Disc
Anti-Lock Braking System (ABS)		○	○	○
Electronic Brake-Force Distribution (EBD)		X	○	○
Brake Assist (BA)		X	○	○
Vehicle Stability Management	Electronic Stability Control (ESC)	X	○	○
	Traction Control System (TC/TCS)	X	○	○
Downhill Brake Control (DBC)		X	○	○
Hill-Start Assist Control (HAC)		X	○	○
Electronic Parking Brake (EPB)		X	○	○
<b>Roof</b>				
Panoramic Sunroof - Power One Touch Safety		X	○	○
Shark Fin Antenna		○	○	○
Roof Rails		○	○	○
Inside Rear View Mirror		Day & Night	ECM + Compass	ECM + Compass
Sunvisor	Vanity Mirror	○ (with Illumination)	○ (with Illumination)	○ (with Illumination)



# Specifications

Variant		FWD A/T GLS	FWD A/T GLS Sport	AWD A/T Ultimate
<b>Interior Trim</b>				
C / Pad Upper Leather Garnish (Artificial Leather)		X	○	○
Luggage Net		○	○	○
Luggage Screen		○	○	○
<b>Locking System</b>				
Central Door Locking		○	○	○
Auto Speed Lock		○	○	○
Power Tailgate		X	X	○
Key Set	Key Type	Jack Knife	Smart Key	Smart Key
	Burglar Alarm	○	○	○
	Push Start	X	○	○
Immobilizer		○	○	○
<b>Exterior</b>				
Front Radiator Grille		Black with Silver Paint	Chrome Coating	Chrome Coating
Bumper	Front	Body Colour & Black	Body Colour & Black	Body Colour & Black
	Rear	Body Colour & Black	Body Colour & Black	Body Colour & Black
Side Mirrors	Finish	Body Colour	Body Colour	Body Colour
	Electrically Adjustable	○ (w/ Heated)	○ (w/ Heated)	○ (w/ Heated)
	Electrically Retractable	○	○	○
	Turn Signal Lamps	○ (LED)	○ (LED)	○ (LED)
	Puddle Lamps	X	○	○
Mud Guard - Fr + Rr		○	○	○
Door Belt Line Chrome Molding		X	○	○
<b>Door</b>				
Upper Trim Finishing	TPO (Fr + Rr)	○	○	○
Center Trim Finishing	TPO (Fr + Rr)	○	○	○

# Specifications

Variant		FWD A/T GLS	FWD A/T GLS Sport	AWD A/T Ultimate
<b>Door</b>				
Door Outside Handle		Body Colour	Chrome Coating	Chrome Coating
Door Inside Handle		Metal Paint	Metal Paint	Metal Paint
Power Window		Auto Down (Driver) + Safety	Auto Up & Down (Driver) + Safety	Auto Up & Down (Driver) + Safety
Chrome Garnish on Switch (All Doors)		X	○	○
<b>Instrumental Panel &amp; Console</b>				
Ash Tray & Cigar Lighter w/ Illumination (Fr)		○	○	○
Cooling Function		X	○	○
<b>AVN</b>				
Infotainment		○ (10.1" Display Audio)	○ (10.1" Display Audio)	○ (10.1" Display Audio)
myHyundai Connectivity		X	○	○
USB / AUX		Aux (FR) + USB (FR + RR)	Aux (FR) + USB (FR + RR)	Aux (FR) + USB (FR + RR)
Bluetooth		○	○	○
6-Speakers: FR/RR/Tweeter		○	○	○
<b>Seat</b>				
Seat Material		Fabric	Fabric	Pure Leather
Power Seat	Driver (8way) + Lumbar Support (2way) + Passenger (8way)	X	○ (Driver's Seat only)	○
Child Restraint System		ISO Fix Child Anchor	ISO Fix Child Anchor	ISO Fix Child Anchor
<b>Lighting</b>				
Front	Full LED Head Lamp w/ LED Static Bending + Auto Leveling Device	Halogen (Manual Leveling)	○	○
	Dedicated LED DRL	○	○	○
	Welcome Lamps	X	○	○
	Front Fog Lamps	○	○	○
Rear	Rear Combination Lamp Type	LED	LED	LED
	High Mount Stop Lamp	○	○	○
Cabin	Front Personal Lamp	○ (Halogen)	○ (LED)	○ (LED)
	Rear Reading Lamps	X	○	○

- The above values are results from internal testing and are subject to change after validation.
- Some of the equipment illustrated or described in this catalog may not be supplied as standard equipment and may be available at extra cost.
- Hyundai Nishat Motor (Private) Limited reserves the right to change specifications and equipment without prior notice.
- The color palettes shown may vary slightly from the actual colors due to the limitations of the printing process.
- Please consult your nearest dealership for full information and availability on colors and trims.

\*Specifications may vary without prior notice  
 \*\*Terms & Conditions Apply

# Specifications

Variant		FWD A/T GLS	FWD A/T GLS Sport	AWD A/T Ultimate
<b>Instrument</b>				
Cluster Type		Conventional Mono (3.5" TFT LCD)	Super Vision (4.2" TFT LCD)	Super Vision (4.2" TFT LCD)
<b>Comfort &amp; Safety</b>				
Parking Sensors	Front & Rear	X	X	○
Auto Cruise Control		○	○	○
Rear View Camera		○ (with Dynamic Guidelines)	○ (with Dynamic Guidelines)	○ (with Dynamic Guidelines)
Wireless Charger		X	○	○
Air Bags	Driver	○	○	○
	Passenger	○	○	○
<b>HVAC</b>				
Air Conditioner		Manual	Dual Zone Automatic Climate Control	Dual Zone Automatic Climate Control
Auto Defogger		X	○	○
Rear AC Ventilation		○	○	○
<b>Wiper</b>				
Front		○	○	○
Rear		○	○	○

**4** YEAR **100,000 km**  
Warranty Coverage

\*Whichever comes first  
\*\*Terms and conditions apply



Unit : mm\*18" Alloy Wheel (Front/Rear) : 1,608/1,620





Dealer Stamp